

GRENDIA EX

Diesel and Petrol Counterbalance
4 Wheel Pneumatic Tyres • 4.0 – 5.5 tonnes

FD/FG40NT
FD/FG45NT
FD/FG50CNT
FD/FG50NT
FD/FG55NT

Designed to perform... built to last

The effectiveness and legendary reliability of Mitsubishi 4 and 5 tonne IC engine forklift trucks has been proved over many years in the most demanding of applications. Generations of forklift truck owners have grown to love and depend upon these tough and highly capable machines. GRENDIA EX builds on those exceptional qualities.

Environmentally friendly, and with the quality, reliability and investment value you would associate with diamonds, its name – meaning 'Green Diamond' – is truly deserved.

Low noise and vibration, a comfortable operating environment and the latest ErgoCentric developments in steering, hydraulic and other controls will all be welcomed by operators. Meanwhile, the IPS2 Integrated Presence System and advanced brake systems will help ensure that they stay safe. And as always, every system and component has been designed and chosen to minimise downtime and maintenance costs.

Frame and body

- **Stylish, purposeful design** reflects this machine's power to work productively, non-stop, whatever the conditions.
- **Robust construction** provides high stability, rigidity and protection, with no exposed wires or hoses.

Mast and fork assembly

- **Strong, high-visibility mast** allows handling of heavy loads in tough environments with total confidence.
- **Wide range of high-quality masts and attachments** delivers precise compatibility and an ideal configuration for each application.

Drive

- **Industrially proved diesel engine** is ultra-reliable and durable, as well as smooth and economical, and easily complies with emission control regulations.
- **Fully floating powertrain** with two-speed forward and one-speed reverse transmission maximises gradeability and travel speed, minimises noise and vibration, and uses maintenance-free gears instead of belts to lower running costs.
- **Adjustable transmission shift timing** increases versatility, for optimum performance in a wide variety of applications.
- **Large diameter drive axle shafts** are extremely durable and require little maintenance.
- **Low-noise air intake** connects directly to intake filter for easy flow and quiet performance.



 **MITSUBISHI**
FORKLIFT TRUCKS

GRENDIA EX

Diesel Counterbalance 4 Wheel Pneumatic Tyres • 4.0 – 5.5 tonnes

Characteristics				
1.1	Manufacturer (abbreviation)		Mitsubishi	Mitsubishi
1.2	Manufacturer's model designation		FD40NT	FD45NT
1.3	Power source: (battery, diesel, LP gas, petrol)		Diesel	Diesel
1.4	Operator type: pedestrian, (operator)-standing, -seated		Seated	Seated
1.5	Load capacity	Q kg	4000	4500
1.6	Load center distance	c (mm)	500	500
1.8	Load distance, axle to fork face	x (mm)	577	577
1.9	Wheelbase	y (mm)	1850	2000
Weight				
2.1	Truck weight, without load / including battery (simplex mast, lowest lift height)	kg	5920	6330
2.2	Axle loading with maximum load, front/rear (simplex mast, lowest lift height)	kg	8960 / 960	9710 / 1130
2.3	Axle loading without load, front/rear (simplex mast, lowest lift height)	kg	2630 / 3290	2780 / 3550
Wheels, Drive Train				
3.1	Tyres: V=solid, L=pneumatic, SE=solid pneumatic - front/rear		L / L	L/L
3.2	Tyre dimensions, front		8.25-15-14PR	300-15-18PR
3.3	Tyre dimensions, rear		7.00-12-14PR	7.00-12-14PR
3.5	Number of wheels, front/rear (x=driven)		2x / 2	2x/2
3.6	Track width (center of tyres), front	b10 (mm)	1175	1175
3.7	Track width (center of tyres), rear	b11 (mm)	1180	1180
Dimensions				
4.1	Mast tilt, forwards/backwards	α / β °	6 / 12	6/12
4.2	Height with mast lowered (see tables)	h1 (mm)	2320	2320
4.3	Free lift (see tables)	h2 (mm)	150	150
4.4	Lift height (see tables)	h3 (mm)	3300	3300
4.5	Overall height with mast raised	h4 (mm)	4430	4430
4.7	Height to top of overhead guard	h6 (mm)	2250	2250
4.8	Seat height	h7 (mm)	1082	1082
4.12	Tow coupling height	h10 (mm)	395	395
4.19	Overall length	l1 (mm)	4220	4350
4.20	Length to fork face (includes fork thickness)	l2 (mm)	3000	3130
4.21	Overall width	b1 / b2 (mm)	1415 / 1965	1460 / 1965
4.22	Fork dimensions (thickness, width, length)	s / e / l (mm)	50 / 150 / 1220	50 / 150 / 1220
4.23	Fork carriage to DIN 15 173 A/B/no		3A	3A
4.24	Fork carriage width	b3 (mm)	1190	1190
4.31	Ground clearance under mast, with load	m1 (mm)	150	150
4.32	Ground clearance at center of wheelbase, with load (forks lowered)	m2 (mm)	227	227
4.33	Working aisle width with 1000 × 1200 mm pallets, crosswise	Ast (mm)	4357	4507
4.34	Working aisle width with 800 × 1200 mm pallets, crosswise	Ast (mm)	4157	4307
4.35	Turning circle radius	Wa (mm)	2580	2730
4.36	Minimum distance between centers of rotation	b13 (mm)	836	903
Performance				
5.1	Travel speed, with/without load	km/h	21.5 / 22.0	21.0 / 22.0
5.2	Lifting speed, with/without load	m/s	0.55 / 0.61	0.55 / 0.61
5.3	Lowering speed, with/without load	m/s	0.50 / 0.50	0.50 / 0.50
5.5	Rated drawbar pull, with/without load	N	27000 / 17400	27000 / 18700
5.7	Gradeability, with/without load	%	29 / 26	26 / 27
5.9	Acceleration time (10 metres) with/without load	s	-	-
5.10	Service brakes (mechanical/hydraulic/electric/pneumatic) VDI 60 cycle		Hydraulic	Hydraulic
IC Engine				
7.1	Manufacturer / Type		Mitsubishi / S6S	Mitsubishi / S6S
7.2	Rated / Nominal output to ISO 1585**	kW	57.5	57.5
7.3	Rated speed to DIN 70 020	rpm	2300	2300
7.4	Number of cylinders / cubic capacity	cm3	6 / 4996	6 / 4996
7.5	Fuel consumption according to VDI 60 cycle	l/h / kg/h	7.9 / -	8.1 / -
Miscellaneous				
8.1	Type of drive control		Powershift 2/1	Powershift 2/1
8.2	Maximum operating pressure for attachments	bar	191	191
8.3	Oil flow for attachments	l/min	80	80
8.4	Noise level, value at operator's ear (EN 12053)	dB(A)	84	84
8.5	Towing coupling design / DIN type, ref.		Pin	Pin

Continuing improvement may lead to changes in these specifications.

** Net power according 97/68/EC: 52kW

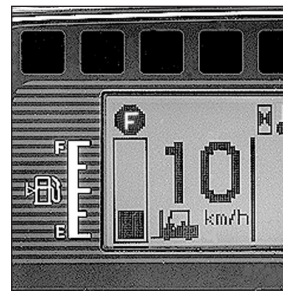
	Mitsubishi	Mitsubishi	Mitsubishi
	FD50CNT	FD50NT	FD55NT
	Diesel	Diesel	Diesel
	Seated	Seated	Seated
	5000	5000	5500
	500	600	600
	582	602	602
	2000	2150	2150
	6850	7300	7640
	10600 / 1250	11020 / 1280	11740 / 1400
	2900 / 3950	3220 / 4080	3170 / 4470
	L/L	L/L	SE/SE
	300-15-18PR	300-15-18PR	300-15-18PR
	7.00-12-14PR	7.00-12-14PR	7.00-12-14PR
	2x/2	2x/2	2x/2
	1175	1175	1175
	1180	1180	1180
	6/12	6/12	6/12
	2400	2400	2400
	150	160	160
	3300	3300	3300
	4430	4580	4580
	2250	2250	2250
	1082	1082	1082
	395	395	395
	4390	4530	4580
	3170	3310	3360
	1460 / 1965	1460 / 1965	1460 / 1965
	50 / 150 / 1220	60 / 150 / 1220	60 / 150 / 1220
	3A	4A	4A
	1190	1190	1190
	150	150	150
	227	227	227
	4542	4692	4742
	4342	4492	4542
	2760	2890	2940
	903	971	971
	21.0 / 22.0	21.0 / 22.0	21.0 / 22.0
	0.47 / 0.53	0.47 / 0.53	0.47 / 0.53
	0.50 / 0.50	0.50 / 0.50	0.50 / 0.50
	26500 / 19400	26500 / 21800	26000 / 21300
	24 / 26	23 / 27	21 / 25
	-	-	-
	Hydraulic	Hydraulic	Hydraulic
	Mitsubishi / S6S	Mitsubishi / S6S	Mitsubishi / S6S
	57.5	57.5	57.5
	2300	2300	2300
	6 / 4996	6 / 4996	6 / 4996
	8.2 / -	8.7 / -	8.9 / -
	Powershift 2/1	Powershift 2/1	Powershift 2/1
	191	191	191
	80	80	80
	84	84	84
	Pin	Pin	Pin



Clear-view overhead guard



Robust mast assembly



Informative LCD display



Fully hydrostatic steering

GRENDIA THE GREEN DIAMOND

The green colour of our trucks is a sign of our commitment to protecting the environment.

The diamond shapes in our logo are a reminder that – like a diamond – a Mitsubishi forklift truck guarantees quality, reliability and a sound investment.

GRENDIA EX

Petrol Counterbalance

4 Wheel Pneumatic Tyres • 4.0 – 5.5 tonnes

Characteristics					
1.1	Manufacturer (abbreviation)			Mitsubishi	Mitsubishi
1.2	Manufacturer's model designation			FG40NT	FG45NT
1.3	Power source: (battery, diesel, LP gas, petrol)			Petrol / LPG	Petrol / LPG
1.4	Operator type: pedestrian, (operator)-standing, -seated			Seated	Seated
1.5	Load capacity	Q	kg	4000	4500
1.6	Load center distance	c	(mm)	500	500
1.8	Load distance, axle to fork face	x	(mm)	577	577
1.9	Wheelbase	y	(mm)	1850	2000
Weight					
2.1	Truck weight, without load / including battery (simplex mast, lowest lift height)		kg	5860	6270
2.2	Axle loading with maximum load, front / rear (simplex mast, lowest lift height)		kg	8940 / 920	9680 / 1090
2.3	Axle loading without load, front / rear (simplex mast, lowest lift height)		kg	2610 / 3250	2750 / 3520
Wheels, Drive Train					
3.1	Tyres: V=solid, L=pneumatic, SE=solid pneumatic - front / rear			L/L	L/L
3.2	Tyre dimensions, front			8.25-15-14PR	300-15-18PR
3.3	Tyre dimensions, rear			7.00-12-14PR	7.00-12-14PR
3.5	Number of wheels, front / rear (x=driven)			2x/2	2x/2
3.6	Track width (center of tyres), front	b10	(mm)	1175	1175
3.7	Track width (center of tyres), rear	b11	(mm)	1180	1180
Dimensions					
4.1	Mast tilt, forwards / backwards	α / β	°	6 / 12	6 / 12
4.2	Height with mast lowered (see tables)	h1	(mm)	2320	2320
4.3	Free lift (see tables)	h2	(mm)	150	150
4.4	Lift height (see tables)	h3	(mm)	3300	3300
4.5	Overall height with mast raised	h4	(mm)	4430	4430
4.7	Height to top of overhead guard	h6	(mm)	2250	2250
4.8	Seat height	h7	(mm)	1082	1082
4.12	Tow coupling height	h10	(mm)	395	395
4.19	Overall length	l1	(mm)	4220	4350
4.20	Length to fork face (includes fork thickness)	l2	(mm)	3000	3130
4.21	Overall width	b1 / b2	(mm)	1415 / 1965	1460 / 1965
4.22	Fork dimensions (thickness, width, length)	s / e / l	(mm)	50 / 150 / 1220	50 / 150 / 1220
4.23	Fork carriage to DIN 15 173 A/B / no			3A	3A
4.24	Fork carriage width	b3	(mm)	1190	1190
4.31	Ground clearance under mast, with load	m1	(mm)	150	150
4.32	Ground clearance at center of wheelbase, with load (forks lowered)	m2	(mm)	227	227
4.33	Working aisle width with 1000 × 1200 mm pallets, crosswise	Ast	(mm)	4357	4507
4.34	Working aisle width with 800 × 1200 mm pallets, crosswise	Ast	(mm)	4157	4307
4.35	Turning circle radius	Wa	(mm)	2580	2730
4.36	Minimum distance between centers of rotation	b13	(mm)	836	903
Performance					
5.1	Travel speed, with/without load		km/h	22.0 / 22.5	22.0 / 22.5
5.2	Lifting speed, with / without load		m/s	0.57 / 0.60	0.57 / 0.60
5.3	Lowering speed, with / without load		m/s	0.50 / 0.50	0.50 / 0.50
5.5	Rated drawbar pull, with / without load		N	28000 / 17200	27500 / 18500
5.7	Gradeability, with / without load		%	30 / 26	27 / 26
5.9	Acceleration time (10 metres) with / without load		s	-/-	-/-
5.10	Service brakes (mechanical/hydraulic/electric/pneumatic) VDI 60 cycle			Hydraulic	Hydraulic
IC Engine					
7.1	Manufacturer / Type			GCT GK45	GCT GK45
7.2	Rated / Nominal output to ISO 1585**		kW	72	72
7.3	Rated speed to DIN 70 020		rpm	2450	2450
7.4	Number of cylinders / cubic capacity		cm3	6 / 4452	6 / 4452
7.5	Fuel consumption according to VDI 60 cycle		l/h / kg/h	- / 5.3	- / 5.9
7.6	Max torque (S.A.E. gross) @ engine speed		Nm / rpm	288 / 1600	288 / 1600
Miscellaneous					
8.1	Type of drive control			Powershift 2/1	Powershift 2/1
8.2	Maximum operating pressure for attachments		bar	191	191
8.3	Oil flow for attachments		l/min	80	80
8.4	Noise level, value at operator's ear (EN 12053)		dB(A)	84	84
8.5	Towing coupling design / DIN type, ref.			Pin	Pin

Continuing improvement may lead to changes in these specifications.

* Fuel consumption and noise data available upon request.



	Mitsubishi FG50CNT Petrol / LPG Seated 5000 500 582 2000	Mitsubishi FG50NT Petrol / LPG Seated 5000 600 602 2150	Mitsubishi FG55NT Petrol / LPG Seated 5500 600 602 2150
	6780	7240	7570
	10570 / 1210	10990 / 1250	11710 / 1360
	2870 / 3920	3190 / 4050	3130 / 4440
	L/L 300-15-18PR 7.00-12-14PR 2x/2 1175 1180	L/L 300-15-18PR 7.00-12-14PR 2x/2 1175 1180	SE/SE 300-15/8.00 7.00-12/5.00 2x/2 1175 1180
	6 / 12 2400 150 3300 4430 2250 1082 395 4390 3170 1460 / 1965 50 / 150 / 1220 3A 1190 150 227 4542 4342 2760 903	6 / 12 2400 160 3300 4580 2250 1082 395 4530 3310 1460 / 1965 60 / 150 / 1220 4A 1190 150 227 4692 4492 2890 971	6 / 12 2400 160 3300 4580 2250 1082 395 4580 3360 1460 / 1965 60 / 150 / 1220 4A 1190 150 227 4742 4542 2940 971
	22.0 / 22.5 0.49 / 0.52 0.50 / 0.50 27500 / 19200 25 / 25 -/	22.0 / 22.5 0.49 / 0.52 0.50 / 0.50 27000 / 21600 23 / 26 -/	21.5 / 22.5 0.49 / 0.52 0.50 / 0.50 27000 / 21000 22 / 25 -/
	Hydraulic	Hydraulic	Hydraulic
	GCT GK45 72 2450 6 / 4452 - / 6.2 288 / 1600	GCT GK45 72 2450 6 / 4452 - / 6.3 288 / 1600	GCT GK45 72 2450 6 / 4452 - / 7.1 288 / 1600
	Powershift 2/1 191 80 84 Pin	Powershift 2/1 191 80 84 Pin	Powershift 2/1 191 80 84 Pin



Auto-style controls



Adjustable steering column



Bright white halogen lights



High all-round visibility

GRENDIA THE GREEN DIAMOND

The green colour of our trucks is a sign of our commitment to protecting the environment.

The diamond shapes in our logo are a reminder that – like a diamond – a Mitsubishi forklift truck guarantees quality, reliability and a sound investment.



GRENDIA EX

FD/FG40-45NT Models

Mast Performance and Capacity

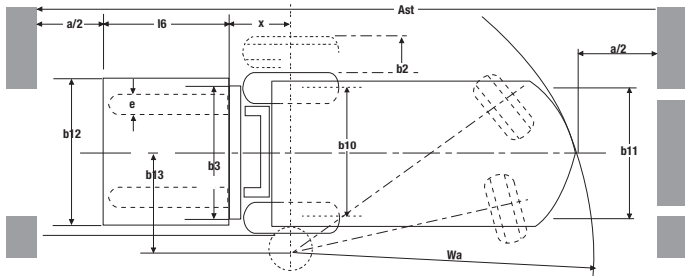
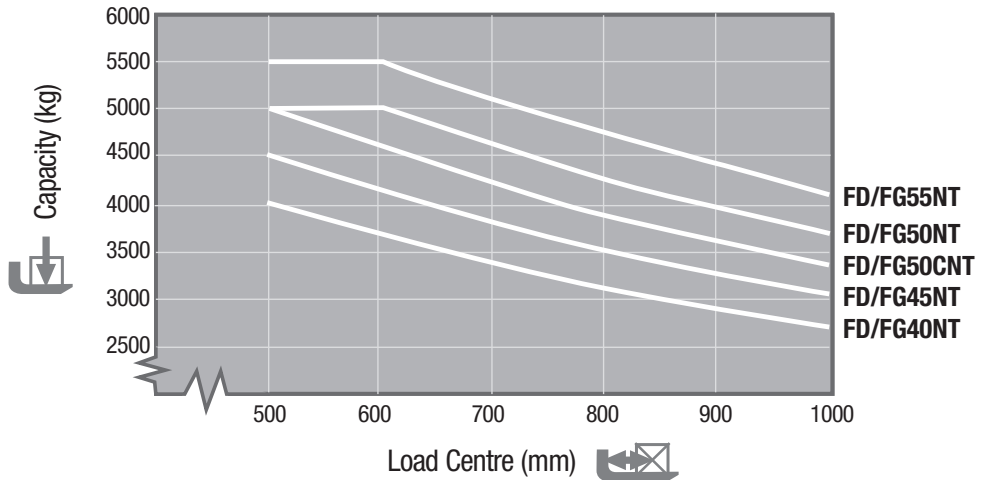
FD / FG40NT & FD / FG45NT													
Mast type	h3 mm	h1 mm	h4 mm	h2 mm	h5 mm	FD/FG40NT	FD/FG40NT	FD/FG45NT	FD/FG45NT	FD/FG40NT	FD/FG40NT	FD/FG45NT	FD/FG45NT
						Q@ c=500mm (pneumatic) kg	Q@ c=600mm (pneumatic) kg	Q@ c=500mm (pneumatic) kg	Q@ c=600mm (pneumatic) kg	Q@ c=500mm (solid pneum.) kg	Q@ c=600mm (solid pneum.) kg	Q@ c=500mm (solid pneum.) kg	Q@ c=600mm (solid pneum.) kg
Simplex	3000	2170	4130	150	-	4000	3500	4500	4000	4000	3500	4500	4000
	3300	2320	4430	150	-	4000	3500	4500	4000	4000	3500	4500	4000
	3700	2520	4830	150	-	4000	3500	4500	4000	4000	3500	4500	4000
	4000	2700	5130	150	-	4000	3500	4500	4000	4000	3500	4500	4000
	4500	3000	5630	150	-	4000	3500	4500	4000	4000	3500	4500	4000
	5000	3250	6130	150	-	3850	3500	4500	4000	4000	3500	4500	4000
	5500	3500	6630	150	-	3600	3400*	4300*	4000*	3700	3500	4400	4000
Duplex	6000	3750	7130	150	-	3500*	3300*	3900*	3900*	3600	3400	4250	3900
	3000	2170	4130	-	1090	4000	3500	4500	4000	4000	3500	4500	4000
Triplex	4100	2700	5190	-	1620	4000	3500	4500	4000	4000	3500	4500	4000
	3700	1950	4830	-	870	4000	3500	4500	4000	4000	3500	4500	4000
Triplex	4000	2050	5130	-	970	4000	3500	4500	4000	4000	3500	4500	4000
	4360	2170	5490	-	1090	4000	3500	4500	4000	4000	3500	4500	4000
	4700	2285	5830	-	1200	3900	3500	4500	4000	4000	3500	4500	4000
	5050	2400	6180	-	1320	3800	3500	4500	4000	3900	3500	4500	4000
	5500	2550	6630	-	1470	3600*	3400*	4200*	4000*	3700	3450	4350	4000
	6000	2750	7130	-	1670	3450*	3250*	4050*	3800*	3550	3300	4200	3900
	6500	2950	7630	-	1870	3000*	3000*	3000*	3000*	3350	3200	4050*	3800*
	7000	3150	8130	-	2070	2400*	2400*	2400*	2400*	3300*	3100*	3500*	3500*

GRENDIA EX

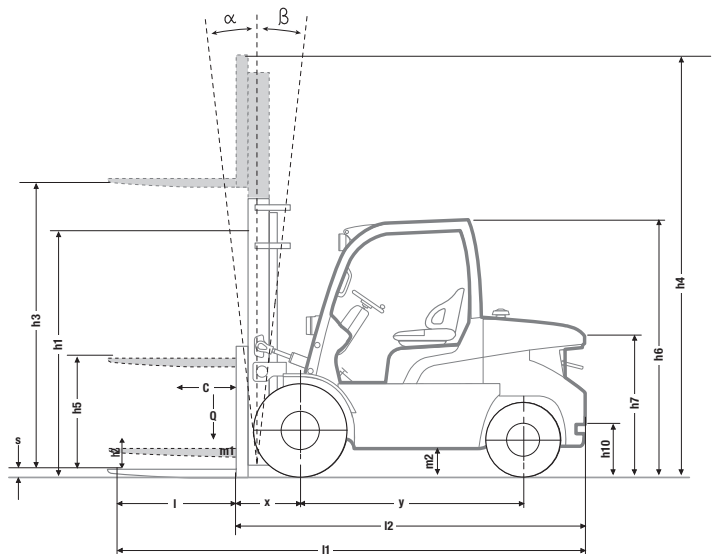
FD/FG40-55NT Models

Capacities at Various Load Centres

Simplex - h3 = 4000 mm



- h1 Height with mast lowered
- h2 Standard free lift
- h3 Lift height
- h4 Height with mast raised
- h5 Full free lift
- Q Lifting capacity, rated load
- c Load centre (distance)
- Ast = Working aisle width
- Wa = Turning radius
- a = Safety clearance = 2 x 100 mm
- l6 = Pallet length
- b12 = Pallet width



GRENDIA EX

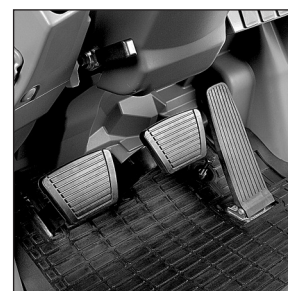
FD/FG50CNT Models

Mast Performance and Capacity

FD / FG50CNT									
Mast type	h3 mm	h1 mm	h4 mm	h2 mm	h5 mm	FD/FG50CNT	FD/FG50CNT	FD/FG50CNT	FD/FG50CNT
						Q@ c=500mm (pneumatic) kg	Q@ c=600mm (pneumatic) kg	Q@ c=500mm (solid pneum.) kg	Q@ c=600mm (solid pneum.) kg
Simplex	3000	2250	4130	150	-	5000	4500	5000	4500
	3300	2400	4430	150	-	5000	4500	5000	4500
	3700	2600	4830	150	-	5000	4500	5000	4500
	4000	2850	5130	150	-	5000	4500	5000	4500
	4500	3100	5630	150	-	5000	4500	5000	4500
	5000	3350	6130	150	-	5000	4500	5000	4500
	5500	3600	6630	150	-	4750*	4500*	4850	4500
6000	3850	7130	150	-	3900*	3900*	4700	4400	
Duplex	3000	2250	4100	-	1170	5000	4500	5000	4500
	4100	2850	5210	-	1770	5000	4500	5000	4500
Triplex	4040	2170	5170	-	1090	5000	4500	5000	4500
	4310	2260	5440	-	1180	5000	4500	5000	4500
	4750	2400	5880	-	1320	5000	4500	5000	4500
	5050	2500	6180	-	1420	5000	4500	5000	4500
	5500	2650	6630	-	1570	4700*	4450*	4800	4500
	6000	2850	7130	-	1770	4200*	4200*	4600	4350
	6500	3050	7630	-	1970	3000*	3000*	4450*	4200*
7000	3250	8130	-	2170	2400*	2400*	3500*	3500*	



Stylish, robust design



Auto-style pedals



Full-suspension, fully adjustable seat

GRENDIA EX

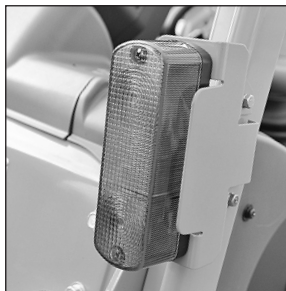
FD/FG50-55NT Models

Mast Performance and Capacity

FD / FG50NT & FD / FG55NT									
Mast type	h3 mm	h1 mm	h4 mm	h2 mm	h5 mm	FD/FG50NT	FD/FG55NT	FD/FG50NT	FD/FG55NT
						Q@ c=600mm (pneumatic) kg	Q@ c=600mm (pneumatic) kg	Q@ c=600mm (solid pneum.) kg	Q@ c=600mm (solid pneum.) kg
Simplex	3000	2250	4280	160	-	5000	5500	5000	5500
	3300	2400	4580	160	-	5000	5500	5000	5500
	3700	2600	4980	160	-	5000	5500	5000	5500
	4000	2850	5280	160	-	5000	5500	5000	5500
	4500	3100	5780	160	-	5000	5500	5000	5500
	5000	3350	6280	160	-	5000	5500*	5000	5500
	5500	3600	6780	160	-	4900*	(4650)*	5000	5500
6000	3850	7280	160	-	4100*	(3450)*	4900	5350*	
Duplex	3000	2250	4250	-	1030	5000	5500	5000	5500
	4100	2850	5360	-	1630	5000	5500	5000	5500
Triplex	4040	2170	5320	-	950	5000	5500	5000	5500
	4310	2260	5590	-	1040	5000	5500	5000	5500
	4750	2400	6030	-	1180	5000	5450	5000	5500
	5050	2500	6330	-	1280	5000	5500*	5000	5500
	5500	2650	6780	-	1430	4900*	(4850)*	5000	5500
	6000	2850	7280	-	1630	4300*	(3500)*	4800	5300*
	6500	3050	7780	-	1830	3150*	-	4650*	-
7000	3250	8280	-	2030	2500*	-	3900*	-	

* Truck equipped with dual tyres. Consult your dealer for the maximum back-tilt allowed, to obtain the capacities specified.

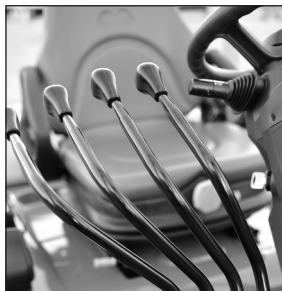
() Capacities shown in brackets for the 5.5 tonnes model show lower capacities compared to 5.0 tonne model.



Comprehensive lighting system



Strong, high-visibility mast



User-friendly hydraulic levers

Steering system

- **Fully hydrostatic steering** is responsive, precise and effortless for the operator and requires only minimal maintenance.

Brakes

- **Powerful drum brake system** gives excellent control with little effort and is easy to maintain.

Hydraulics

- **Powerful hydraulic system** is specifically designed to minimise noise in the operator's environment.

Electrical and control systems

- **Integrated Presence System 2 (IPS2)** pioneered by Mitsubishi prevents all movement of the truck and its mast if the operator is not seated.
- **Operator identification system** can be activated – if owner wishes – to prevent unauthorised use of the truck.
- **Onboard diagnostics** and detailed fault diagnosis via laptop connection alerts operators and service engineers to problems, speeds up servicing and prevents damage.

Operator compartment and controls

- **Market-leading ErgoCentric design** results in easy on-off access, a unique, adjustable steering column with position memory, user-friendly controls, a practical layout and great all-round visibility – for maximum precision and productivity.
- **Full-suspension seat** with hip support keeps driver comfortable through the longest of shifts.
- **Hydraulic control levers** are easy to reach and easy to use.
- **Automotive-style pedals** with optimum pedal angle are easy to use and give good control without leg strain.
- **Low noise level at operator's ear** and low vibration from powertrain increases comfort and reduces fatigue.
- **Clear and comprehensive instrument panel** with LCD display keeps operator and manager fully informed of, for example, speed, time, engine hours, service intervals and faults – to optimise productivity, truck life and safety.

Other features

- **Long service interval and long life of components** reduces downtime and associated costs.
- **RapidAccess features** give unequalled ease of entry to all areas for checks and maintenance.

Options

- **Oil-cooled wet disc brakes and FlexControl intelligent truck protection package**
- **Speed limiter**

When **reliability** is **everything**

Like any product bearing the Mitsubishi name, our materials handling equipment benefits from the huge resources and cutting-edge technology of one of the world's largest corporations. So when we promise you **quality, reliability** and **value for money**, you know it's a guarantee we have the power to deliver.

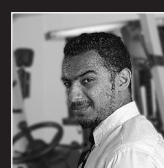
Every model in our comprehensive, award-winning range of forklift trucks and warehouse equipment is built to a high specification and is designed to keep on working for you... day after day... year after year... whatever the job... whatever the conditions.

To ensure your truck stays in constant productive action, we have a network of local dealers – hand-picked for their commitment to customer care... and backed up by the Mitsubishi Forklift Trucks organisation. No matter where you are, we have a dealer close by – ready and willing to meet your needs.

That friendly local service covers everything from identifying the perfect model and configuration for your application to providing competitive, flexible finance and maintenance packages, unbeatable warranties, long and short term hire, and highly responsive field service and repairs... as well as the industry's quickest and most reliable parts supply.

Only Mitsubishi can give you this combination of global engineering excellence and outstanding local support... only Mitsubishi offers you such a quality product at such an affordable price... and only Mitsubishi places reliability as high as you do in its priorities. Contact your local dealer now and see what Mitsubishi can do for you.

You can find your nearest dealer at www.mitforklift.com



FlexControl intelligent truck protection:

- combined with oil-cooled wet disc brakes in an option package for high-intensity applications
- delivers dynamic performance with minimum wear of transmission components and tyres



Integrated Presence System 2 (IPS2) provides:

- a hydraulic and travel interlock system that prevents all movement of the truck and its mast if the driver is not seated
- a seat belt warning light
- an automatic parking brake with alarm

The term 'Integrated Presence System' (IPS) is intended as a trading style, only to describe a number of design features on the Mitsubishi trucks to which IPS is applied. It does not imply that the truck can be driven without appropriate operator training and without due care and attention. The manufacturer (MCFE, Almere, the Netherlands) cannot accept any responsibility for any accidents or damage caused by incorrect or dangerous use of its equipment.



CESM1891AME (05/18)
© 2018 MCFE
Printed in The Netherlands

mitforklift@mcf.nl www.mitforklift.com

NOTE: Performance specifications may vary depending on standard manufacturing tolerances, vehicle condition, types of tyres, floor or surface conditions, applications or operating environment. Trucks may be shown with non-standard options. Specific performance requirements and locally available configurations should be discussed with your distributor of Mitsubishi forklift trucks. Mitsubishi follows a policy of continual product improvement. For this reason, some materials, options and specifications could change without notice.

