

VELIA EM

THE QUICK AND EASY NEXT-LEVEL ORDER PICKER

In order picking, where the pressure is on, trucks are put to the test and only the strongest survive. Our VELiA EM range of second-level order pickers is truly exceptional. Developed for efficient and safe picking, this 1000 kg workhorse does more than protect your operators... it works harmoniously with them, too.



OPBL10P
with EasyLift

OPBL10P
without EasyLift

SPEC SHEET

Second Level Order Pickers

1.0 tonnes



Take its ultra-low step height. At just 160mm, it's up to 45% lower than some competitors. But, more than that, it significantly reduces your operator's efforts, as well as the risk of slips, trips and falls.

And then there's VELiA EM's wide entry. At 603 mm wide, it can accommodate drivers of all sizes in comfort.

FRAME AND BODY

- **MaxVision** (option not standard) overhead guard maximises operator field of vision for increased productivity and safety.
- **Robust design** ensures smooth, stable ride and excellent picking performance.
- **Wraparound steel bumper** increases durability and operator protection.

DRIVE

- **Powerful AC motor** means high drive speed and acceleration – even when loaded – plus smooth, quiet, controlled operation, extended shift length and lower maintenance requirements.
- **ECO mode** reduces energy consumption – without compromising on performance.
- **High-speed option increases speed from 9 to 12 km/hr.**

VELiA EM

Mitsubishi OPBL10P Series

Second Level Order Pickers

1.0 tonnes

ELECTRICAL CONTROL SYSTEMS

- **Performance setting** – including pre-set modes – allows instant programming without special tools.
- **On-board diagnostics and fault memory folder** keep operator and service engineer aware of any problems, speed up servicing and help prevent damage.

OPERATOR ENVIRONMENT & CONTROLS

- **Class-leading step height (just 160mm)** offers easy on/off access to keep operators alert and productive throughout shifts.
- **Easy-access operator's compartment** is spacious and features widest entry in its class for faster mounting and dismounting.
- **EasyLift design** (standard with 1800mm model and optional with 1200mm model) allows operators to raise/lower the pallet to comfortable heights during picking and retrieving, reducing the risk of back strain.
- **High-visibility cabin** maximises forward views for reduced damage risk, while increasing operator comfort and efficiency.
- **Operator Presence Sensor** covers a wide area – allowing for free operator movement, while eliminating a common trip hazard.
- **Super-grip floor** is non-slip ensuring operators are safe, for confident operations.

- **PIN-code access** for up to 100 users is possible – preventing unauthorised use.
- **Battery discharge indicator** keeps operators aware of battery discharge levels – ensuring high-efficiency operations and long battery life.
- **MaxPro side-access gates with automatic sensors** (standard with EasyLift design and optional with 1200mm lift without EasyLift design) prevent unsafe use of truck with gates open at heights above 1200 mm.
- **Easy-access storage compartments** ensure pickers have everything they need to work productively within easy reach.
- **Ergonomic steering wheel** offers smooth controlled movement to keep operators alert and operations precise.

OTHER FEATURES

- **Rapid battery access** reduces time needed for daily checks and maintenance – for maximum uptime.
- **Robust battery rollers** speed up changeovers – ensuring pickers can focus on their job.



There is more information on VELiA EM on mitforklift.com



For more extensive information on this range please visit our website mitforklift.com

mf12.eu/veliaem

Continuing improvement may lead to changes in these specifications

FEATURES & BENEFITS

Characteristics				without EasyLift	with EasyLift
1.1	Manufacturer			Mitsubishi	Mitsubishi
1.2	Manufacturer's model designation			OPBL10P	OPBL10P
1.3	Power source: (battery, diesel, LP gas, petrol)			Battery	Battery
1.4	Operator type: pedestrian, (operator)-standing, -seated			Stand-on	Stand-on
1.5	Load capacity ¹	Q	kg	1000	1000
1.6	Load center distance	c	mm	600	600
1.8	Load wheel axle to fork face (forks lowered)	x	mm	100	120
1.9	Wheelbase	y	mm	1371	1371
Weight					
2.1a	Truck weight with load, with minimum battery weight		kg	2450	2600
2.2a	Axle loadings with nominal load & minimum battery weight, drive/load side		kg	430 / 2020	440 / 2160
2.3a	Axle loadings without load & with minimum battery weight, drive/load side		kg	950 / 500	950 / 650
Wheels, Drive Train					
3.1	Tyres: PT=Power Thane, Vul=Vulkollan, drive/load side			Vul / Vul	Vul / Vul
3.2	Tyre dimensions, drive side		mm	250 × 105	250 × 105
3.3	Tyre dimensions, load side		mm	120 × 115	120 × 115
3.5	Number of wheels, load/drive side (x = driven)			2 / 1x	2 / 1x
3.7	Track width (center of tyres), load side	b11	mm	674	674
Dimensions					
4.2	Height with mast lowered	h1	mm	1630	2196
4.4	Lift height (without h9)	h3	mm	1040	1640
4.5	Height with mast extended	h4	mm	2670	3790
4.7	Height to top of overhead guard	h6	mm	2300	2300
4.8	Seat or stand height	h7	mm	160-1200	160-1800
4.10	Height of support legs	h8	mm	115	115
4.11	Supplementary lift	h9	mm	723	723
4.14	Platform height, raised	h12	mm	1200	1800
4.15	Fork height, fully lowered	h13	mm	90	90
4.19	Overall length	l1	mm	2805	2825
4.20	Length to fork face	l2	mm	1655	1675
4.21	Overall width	b1	mm	810	810
4.22	Fork dimensions (thickness, width, length)	s/e/l	mm	70 / 147 / 1150	70 / 147 / 1150
4.25	Outside width over forks (minimum/maximum)			450-700	450-700
4.32	Ground clearance at center of wheelbase (forks lowered)	m2	mm	35	35
4.33a	Aisle width for pallets 1000 × 1200 (l6 × b12) crossways	Ast	mm	Platform/load width + 90 mm clearance each side	
4.34a	Aisle width for pallets 800 × 1200 (b12 × l6) lengthways	Ast	mm	3131	3150
4.35	Turning radius	Wa	mm	1570	1570
4.41	Transfer aisle width (pallet 1000 × 1200mm lengthwise & 200 mm clearance)		mm	Platform/load width + 90 mm clearance each side	
Performance					
5.1	Travel speed, with / without load		km/h	9 / 9	9 / 9
5.2	Lifting speed, with / without load		m/s	0.12 / 0.20	0.11 / 0.19
5.3	Lowering speed, with / without load		m/s	0.25 / 0.23	0.24 / 0.22
5.8	Max gradeability, with / without load		%	10.2	10.2
5.9	Acceleration time (over 10 m), with / without load		s	5.6 / 4.9	5.5 / 4.8
5.10	Service brake			Regenerative / electrical	Regenerative / electrical
Electric motors					
6.1	Drive motor capacity (60 min. short duty)		kW	Mahle 2.7	Mahle 2.7
6.2	Lift motor output at 15% duty factor		kW	2.2 (5%)	2.2 (5%)
6.3	Battery according to DIN 43531/35/36, A, B, C, no			BS	BS
6.4	Battery voltage / rated capacity (5 h)		V/Ah	24 / 486-600	24 / 486-600
6.5	Battery weight (± 5%)		kg	Min 450	Min 450
6.6	Energy consumption according to VDI cycle		kWh/h	n/a	n/a
Miscellaneous					
8.1	Type of drive control			AC Traction	AC Traction
10.7	Level of noise at the ear level of the driver according to EN 12 053:2001 and EN ISO 4871 in work LpAZ		db(A)	57	57

¹ If adjustable forks, then load capacity is max 900 kg on LC 600 mm

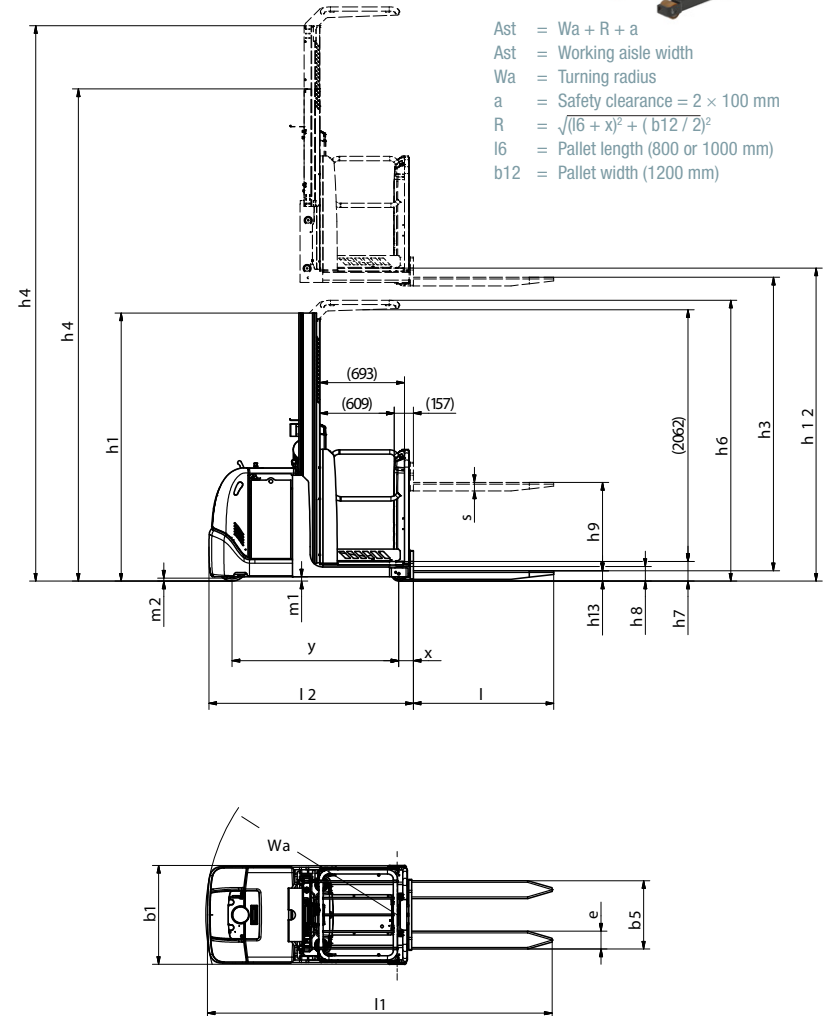
Continuing improvement may lead to changes in these specifications

VELIA EM

Mitsubishi OPBL10P Series

Second Level Order Pickers

1.0 tonnes



LOAD DERATION – Q KG OPBL10P, 1200MM PLATFORM LIFT Load deration based on load evenly spread along the forks							
h4 mm	h3 mm	h5 mm	h mm	D mm	No EasyLift Fixed forks	With EasyLift (Stroke EasyLift 720 mm)	
						Fixed forks	Adjustable forks
Platform floor height	Closed mast height	Mast height extended	Fork height	Load center distance	Max capacity	Max capacity	Max capacity
1200	1630 (pillars)	2670	H4 - 70 = 1130 No EasyLift	400-600	1000	-	-
			H4 - 70 + 720 = 1850 With EasyLift	400-600	-	1000	n/a
				400-500	-	1000	1000
				80	-	1000	900

LOAD DERATION – Q KG OPBL10P, 1800MM PLATFORM LIFT (With EasyLift, stroke 720mm) Load deration based on load evenly spread along the forks						
h4 mm	h3 mm	h5 mm	h mm	D mm	Fixed forks	Adjustable forks
					Q kg	Q kg
Platform floor height	Closed mast height	Mast height extended	Fork height	Load center distance	Max capacity	Max capacity
1800	2196	3790 (pillars)	H4 - 70 + 720 = 2450	400-600	1000	-
				400-500	1000	1000
				600	1000	900



Continuing improvement may lead to changes in these specifications

Models shown: OPBL10P 1200mm platform lift, OPBL10P 1200mm platform lift with optional EasyLift, OPBL10P 1800mm platform lift

VELIA EM

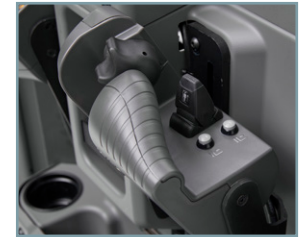
Mitsubishi OPBL10P Series

Second Level Order Pickers

1.0 tonnes

- Standard
- Option

	OPBL10P without EasyLift	OPBL10P with EasyLift
GENERAL		
Micro-computer incl. Hour meter and battery indicator	●	●
PIN code log in, 100 codes	●	●
Key switch entry	●	●
Drive and lift controls on mast side	●	●
Operators presence sensor in floor	●	●
Cornering control	●	●
MaxPro gates	●	●
Warning light	●	●
Battery on steel rollers	●	●
ENVIRONMENT		
Chill store design, with rust protected axles	●	●
Cold store modification (-35°C)	●	●
DRIVE, LIFT CONTROLS		
Easylift	●	●
Extra buttons for Easylift (mast side)	●	●
Walk beside, drive buttons and EasyLift buttons	●	●
COMPUTER EQUIPMENT		
Operator and vehicle management	●	●
SAFETY		
MaxPro side access gates	●	●
MaxVision overhead guard	●	●
Gate interlock, <1200 mm platform height	●	●
Gate open audible warning, >415 mm platform lift	●	●
OTHER		
Increased drive speed, 12 km/h	●	●
Easyview display with steering wheel indicator	●	●
Mini steering wheel	●	●
Key switch entry	●	●
Light in cabin (racks)	●	●
Light in cabin (interior)	●	●
Radio with MP3	●	●
Converter 24-12 V, 8 A, 96 W outlet	●	●
12 V / 8 A DC power socket	●	●
Equipment holder, RAM system, Size C	●	●
Foldable driver's cushion	●	●
Comfort fan for driver	●	●
Extra storage in platform	●	●
Fire extinguisher	●	●



EasyLift control



Optional driver's cushion



Walk-beside control



Robust battery rollers

Continuing improvement may lead to changes in these specifications

STANDARD EQUIPMENT & OPTIONS

when
reliability is
everything...

VELIA

THE FRONT RUNNER

When developing the award-winning VELiA family of low, mid and high level order pickers, our primary aim was to deliver exceptional productivity through unrivalled ergonomics and driveability.



Like any product bearing the Mitsubishi name, our materials handling equipment benefits from the tremendous heritage, huge resources and cutting-edge technology of one of the world's largest corporations – Mitsubishi Heavy Industries Group.

Engineering spacecraft, jet planes, power plants and more, MHI specialises in those technologies where performance, dependability and superiority decide your success or failure...

So when we promise you **quality, reliability and value for money**, you know it's a guarantee we have the power to deliver.

That's why every model in our award-winning and comprehensive range of lift trucks and warehouse equipment is built to a high specification – to ensure it keeps working for you. Day after day. Year after year. Whatever the job. Whatever the conditions.

YOU'LL NEVER WORK ALONE

As your local authorised dealer, we are here to keep your trucks working – through our extensive experience, our technical excellence and our commitment to customer care.

We are your local experts, backed by efficient channels to the entire Mitsubishi Forklift Trucks organisation.

No matter where you are, we are close by – with the capability to meet your needs.

Discover how Mitsubishi gives you more from your local authorised dealer or when you visit our website www.mitforklift.com

Performance specifications may vary depending on standard manufacturing tolerances, vehicle condition, types of tyres, floor or surface conditions, applications or operating environment. Trucks may be shown with non-standard options. Specific performance requirements and locally available configurations should be discussed with your distributor of Mitsubishi forklift trucks. Mitsubishi follows a policy of continual product improvement. For this reason, some materials, options and specifications could change without notice.

mitforklift@mcf.nl

WESM1921 (08/18) © 2018 MCFE



MOVE THE WORLD FORW>RD MITSUBISHI
HEAVY
INDUSTRIES
GROUP

MITSUBISHI
FORKLIFT
BRIEFING
mft2.eu/fb

App Store
Google Play
mft2.eu/apps

YouTube
mft2.eu/youtube

Facebook
mft2.eu/facebook

MITSUBISHI
FORKLIFT TRUCKS